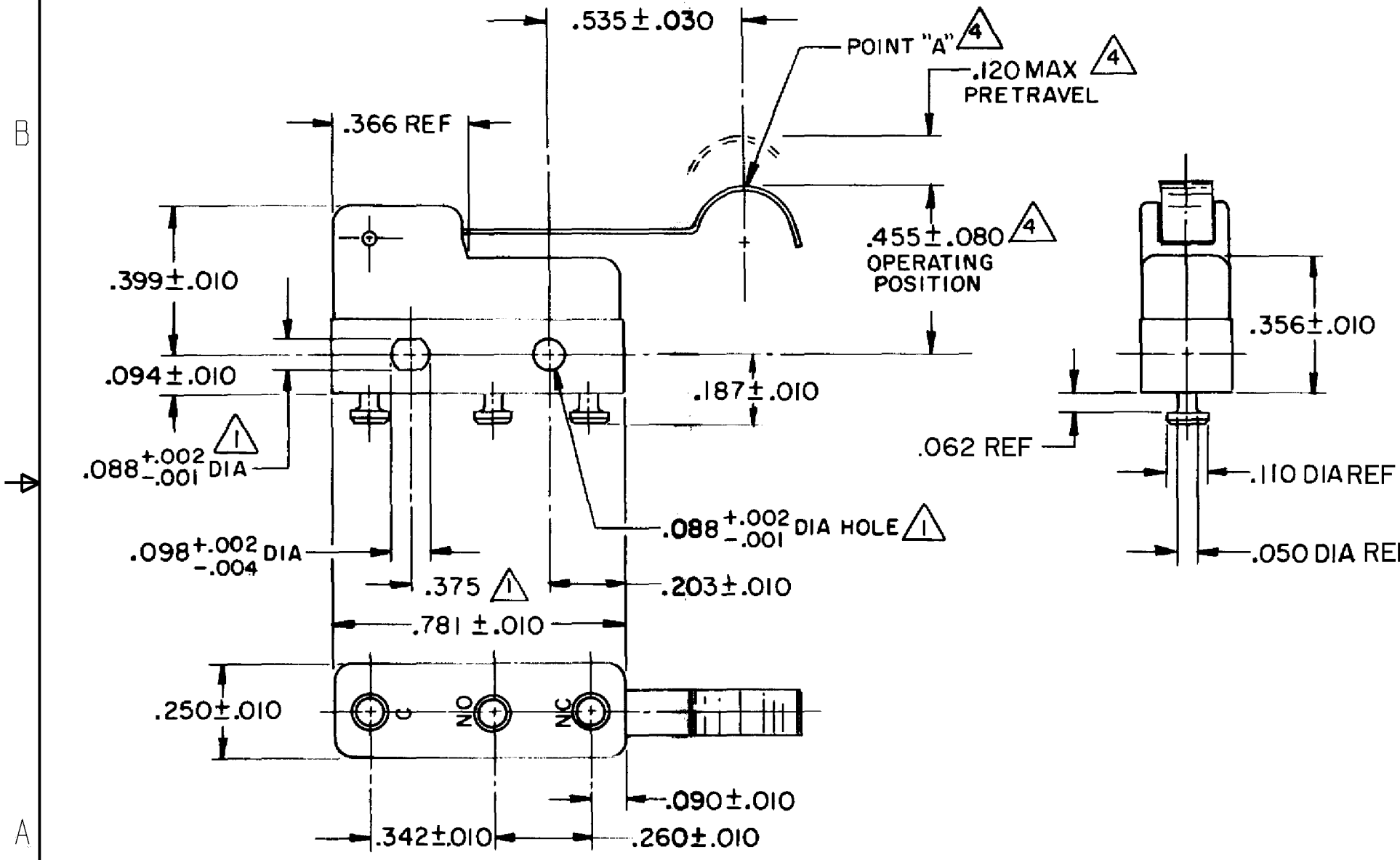
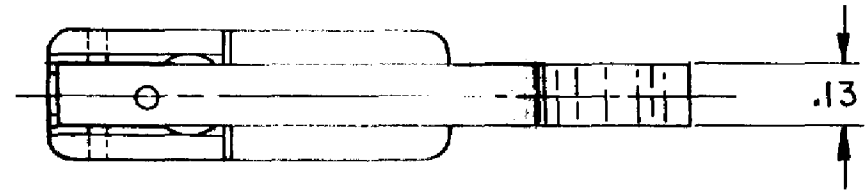


HONEYWELL  
PART NUMBER  
311SM705-T  
PRODUCT CODE  
TZA2685

REV	DOCUMENT	CHANGED BY	CHECK
7	0038445	SSK 21APR08	BLR



- NOTES**
- ▲ MOUNTING HOLES WILL ACCEPT PINS OR SCREWS OF .087 MAX DIA ON .375 ± .002 CENTERS
  - 2- SWITCH WILL WITHSTAND TEMPERATURE OF 250°F
  - 3- TERMINALS ARE PLATED FOR SOLDERING
  - ▲ - CHARACTERISTICS TAKEN AT POINT "A"

RELEASE NO.	PR-275
REPLACES	-

<b>CHARACTERISTICS</b> ▲
OPERATING FORCE -- 12 GRAM MAX
RELEASE FORCE -- 2 GRAM MIN
DIFFERENTIAL TRAVEL -- .015 MAX
OVERTRAVEL -- .026 MIN

<b>ELECTRICAL DATA</b>		
CONTACT ARRANGEMENT SPDT		
30 VOLTS DC RATING		
	SEA LEVEL	50,000 FT
INDUCTIVE	3 AMP	2.5 AMP
RESISTIVE	5 AMP	5 AMP
MAXIMUM INRUSH 24 AMP		
APPROVALS	UL, CSA	4A, 250 VAC
		UL, CSA
		UL, CSA

<b>DESIGN UNITS:</b> INCH	
TOLERANCES UNLESS NOTED:	
NO PLACE	X ±
ONE PLACE	.X ±
TWO PLACE	.XX ±
THREE PLACE	.XXX ±
FOUR PLACE	.XXXX ±
ANGLES	±
THIRD ANGLE PROJECTION	

DRAWN	VK	21FEB 08
CHECK	RJ	21FEB 08
THIS DRAWING COVERS A PROPRIETARY ITEM AND IS THE PROPERTY OF HONEYWELL. THIS DRAWING IS NOT TO BE COPIED OR USED WITHOUT THE PERMISSION OF HONEYWELL.		
INTERPRET PER ANSI Y14.5M-1982 OTHER HONEYWELL ENGINEERING STANDARDS MAY APPLY		
RASTER		

<b>Honeywell</b>			
TITLE <b>SWITCH - BASIC</b>			
SIZE	TYPE	DRAWING NAME	REV
<b>B</b>	<b>I</b>	<b>311SM705-T</b>	<b>7</b>
SCALE	-	WEIGHT .006 LB MAX	SHEET 1 OF 1