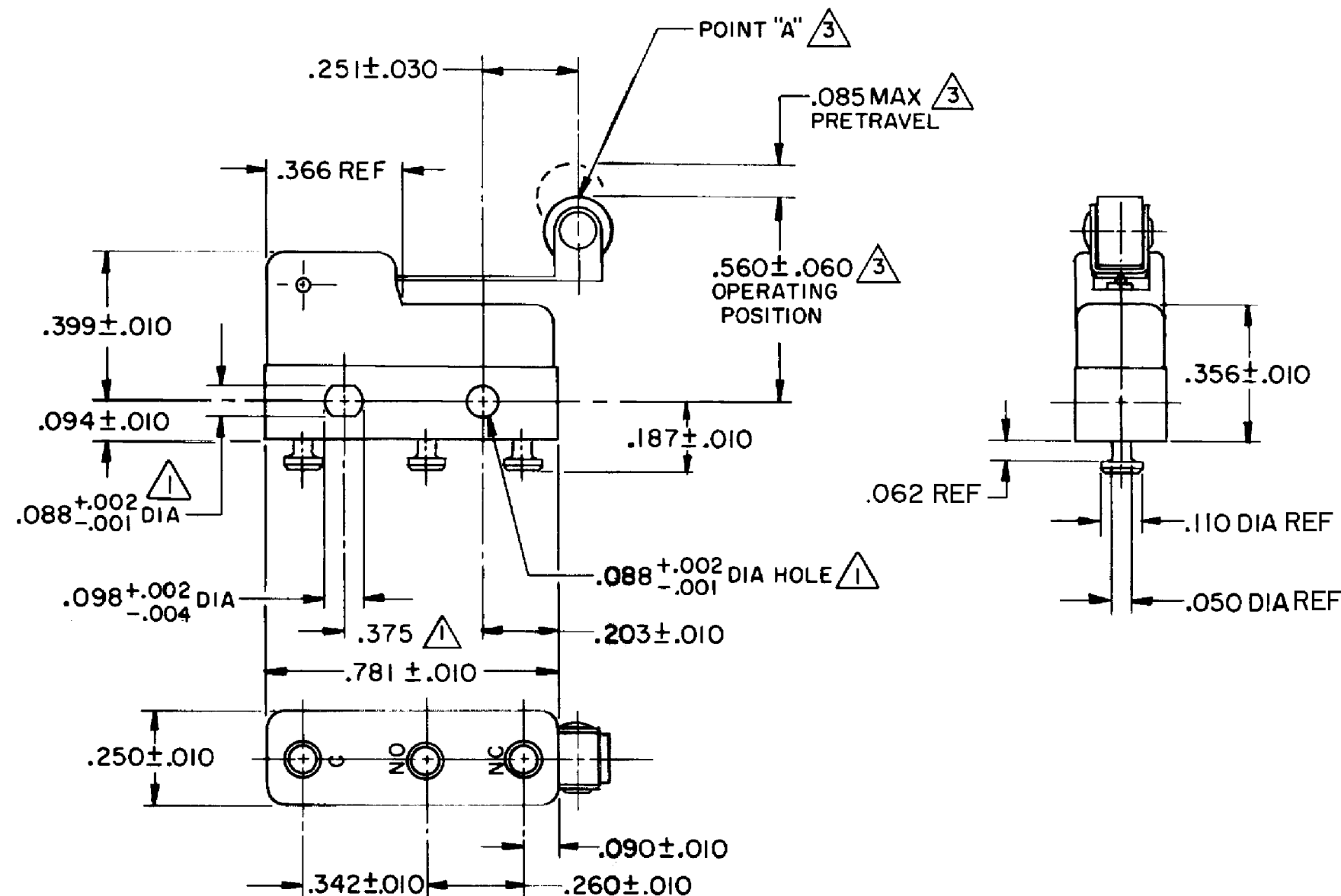
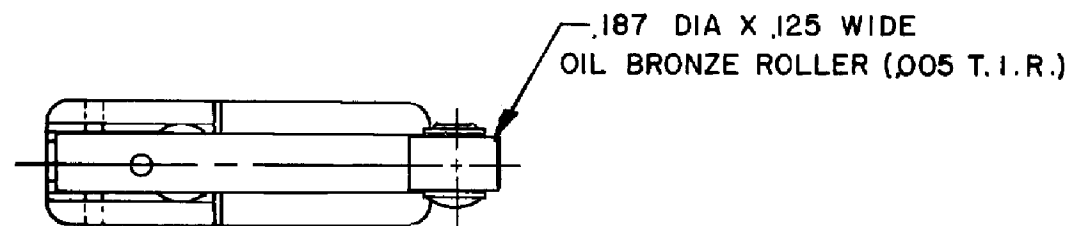


HONEYWELL
PART NUMBER
311SM706-T
PRODUCT CODE
TZA2686

REV	DOCUMENT	CHANGED BY	CHECK
9	0038445	SSK 28APR08	BLR



- NOTES**
- 1 MOUNTING HOLES WILL ACCEPT PINS OR SCREWS OF .087 MAX DIA ON .375 ± .002 CENTERS
 - 2 SWITCH WILL WITHSTAND TEMPERATURE OF 250°F
 - 3 CHARACTERISTICS TAKEN AT POINT "A"
 - 4 TERMINALS ARE PLATED FOR SOLDERING

RELEASE NO. PR-1059
REPLACES

CHARACTERISTICS 3

OPERATING FORCE -- 16 GRAM MAX

RELEASE FORCE -- 3 GRAM MIN

DIFFERENTIAL TRAVEL -- .013 MAX

OVERTRAVEL -- .018 MIN

ELECTRICAL DATA

CONTACT ARRANGEMENT SPDT

30 VOLTS DC RATING

	SEA LEVEL	50,000 FT
INDUCTIVE	3 AMP	2.5 AMP
RESISTIVE	5 AMP	5 AMP

MAXIMUM INRUSH 24 AMP

DESIGN UNITS: INCH

TOLERANCES UNLESS NOTED:

NO PLACE	X	±	
ONE PLACE	.X	±	0.030
TWO PLACE	.XX	±	0.015
THREE PLACE	.XXX	±	0.005
FOUR PLACE	.XXXX	±	
ANGLES		±	

THIRD ANGLE PROJECTION

DRAWN	VK	21FEB 08
CHECK	RJ	21FEB 08
THIS DRAWING COVERS A PROPRIETARY ITEM AND IS THE PROPERTY OF HONEYWELL. THIS DRAWING IS NOT TO BE COPIED OR USED WITHOUT THE PERMISSION OF HONEYWELL.		
INTERPRET PER ANSI Y14.5M-1982 OTHER HONEYWELL ENGINEERING STANDARDS MAY APPLY		

Honeywell

TITLE SWITCH - BASIC

SIZE	TYPE	DRAWING NAME	REV
B	I	311SM706-T	9
SCALE	-	WEIGHT .006 LB MAX	SHEET 1 OF 1